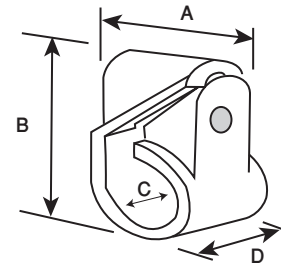


THE PURPOSE OF AFTEC CABLE CLEAT

The requirements of the IEE Wiring Regulations state that “Every cable or conductor used as a fixed wiring shall be supported in such a way that it is not exposed to undue mechanical strain, AFTEC Cable Cleats meet this requirement with the added bonus that they also enable a neat and orderly installation to be achieved.

A range of AFTEC Cable Cleats is available to fix cables to a variety of surfaces – including ladder, tray, channel, concrete or masonry. Design features include ease of installation, the ability to accept a wide range of cable diameters, compact proportions and the facility for either double or multi-stacked arrangements to save space. AFTEC Cable Cleats are made from various materials to suit the environment and to be compatible with the cable sheaths. In addition, they must be capable of resisting the mechanical loads of the system and of providing the necessary restraint if a short circuit fault were to occur within the system. Cleats satisfy all the above criteria, and items are available to suit the most hostile of environments. For example, certain cleats can withstand temperature excursions up to 1000°C for up to two hours.

All sizes of the more commonly used cables can be accommodated with most AFTEC Cable Clamps, offering a range-take capability second to none. For example, the AFTEC cleat range comprises just eight sizes, which both simplifies ordering and stocking, and also enables technicians to carry sufficient quantities of the various sizes around with them to enable the job to be completed quickly.



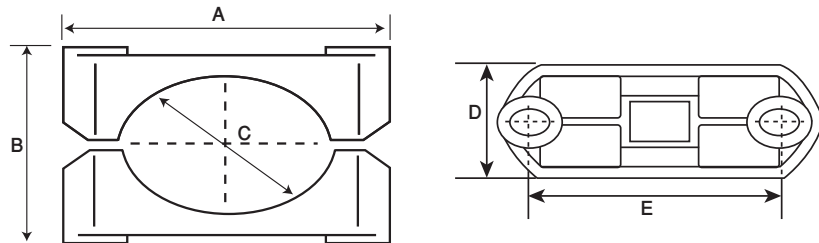
SINGLE BOLT CLEAT

Aftec single bolt cleat are one piece fixing cleat and also can be double stacked on one fixing. Its a fast, convenient way of cable installation. Cable cleats ranging from 10mm to 51mm cable dia in eight different sizes.

Technical Data

Material : Black Polypropylene
 Operating temperature : -20°C To +85°C

MODEL NO.	CABLE DIA - C (mm)		CLEAT DIMENSIONS(mm)				APPROX WEIGHT GMS
			A (mm)		B	D	
	MIN	MAX	Min	Max			
ASBC-AA	10	15	14	17	31	12	3
ASBC-AB	12	17	16	21	36	14	3.5
ASBC-AC	15	20	20	26	43	16	6
ASBC-AD	18	24	26	31	51	18	9
ASBC-AE	22	29	31	38	57	20	12.5
ASBC-AF	26	34	34	42	65	22	16.5
ASBC-AG	32	42	42	53	78	25	24.5
ASBC-AH	39	51	49	61	91	26	35.5



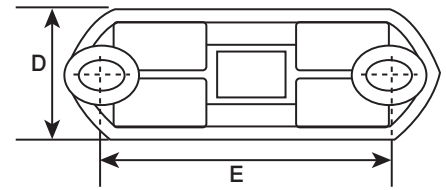
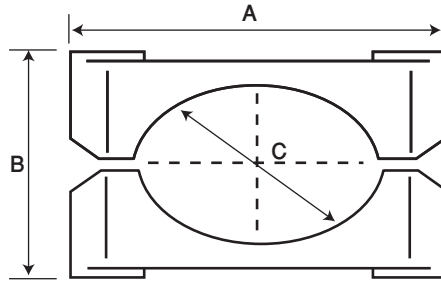
DOUBLE BOLT CLEAT

Aftec double bolt cleat are two piece fixing cleat and also can be double stacked on one fixing. Its a fast, convenient way of cable installation. Cable cleats ranging from 50mm to 94mm cable dia in seven different sizes.

Technical Data

Material : Black Polypropylene
 Operating temperature : -20°C To +85°C

MODEL NO.	CABLE DIA- C (mm)		CLEAT DIMENSIONS(mm)				APPROX WEIGHT GMS
			B	A	D	E	
	MIN	MAX					
ATBC-AA	50	59	89	103	45	80	95
ATBC-AB	55	64	92	101	45	80	100
ATBC-AC	61	70	97	114	45	92	110
ATBC-AD	68	76	103	113	50	92	135
ATBC-AE	73	81	111	127	50	104	155
ATBC-AF	79	87	119	125	50	104	160
ATBC-AG	85	93	121	136	60	114	205



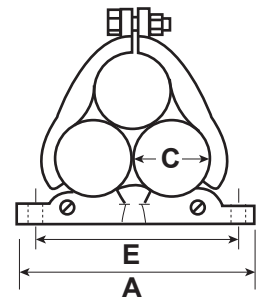
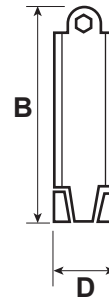
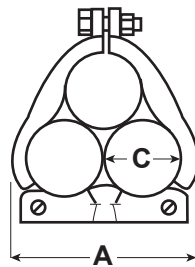
TWO BOLT ALUMINIUM CLEAT

Aftec two bolt two Aluminum cleats are manufactured from plain LM6 aluminum. Used to fix power cables in dry industrials or outdoor applications. Can be epoxy coated for use in harsh environments.

Technical Data

Material : Plain LM6 Aluminum
 Operating temperature : -40°C To +85°C

MODEL NO.	CABLE DIA- C (mm)		CLEAT DIMENSIONS(mm)				FIXING HOLE mm
	MIN	MAX	B	A	D	E	
AACC-AA	51	57	68	76	59	96	M10
AACC-AB	57	64	75	76	49	96	M10
AACC-AC	64	70	84	118	64	96	M10
AACC-AD	70	76	90	114	64	134	M10
AACC-AE	76	83	96	114	64	142	M12
AACC-AF	83	89	102	114	64	142	M12
AACC-AG	89	95	114	114	64	154	M12
AACC-AH	95	101	120	126	76	154	M12
AACC-AI	101	108	134	140	76	169	M12
AACC-AJ	108	114	140	140	76	169	M12



Trefoil Aluminium Cable Cleat

Aftec aluminum trefoil- cleats are manufacture from extracted aluminum to BS EN 755.

Robust to withstand harsh environment & heavy cable loads. And come with easy one bolt , two bolt holdings.

Technical Data

Material

: Plain LM6 Aluminum

Operating temperature

: -40°C To +85°C

MODEL NO SINGLE FIXING	MODEL NO DOUBLE FIXING	CABLE DIA- C (mm)		CLEAT DIMENSIONS(mm)				
		MIN	MAX	B	D	SINGLE FIXING A		E
						DOUBLE FIXING A		
AATSC-AA	AATTC-AA	24	25	94	38	75	128	102
AATSC-AB	AATTC-AB	25	27	97	38	75	128	102
AATSC-AC	AATTC-AC	27	28	100	38	75	128	102
AATSC-AD	AATTC-AD	28	30	103	38	76	130	104
AATSC-AE	AATTC-AE	30	32	105	38	79	133	107
AATSC-AF	AATTC-AF	32	34	106	38	83	135	109
AATSC-AG	AATTC-AG	34	35	109	38	86	137	110
AATSC-AH	AATTC-AH	35	36	113	38	89	138	113
AATSC-AI	AATTC-AI	36	38	116	38	92	140	114
AATSC-AJ	AATTC-AJ	38	40	119	38	95	145	118
AATSC-AK	AATTC-AK	40	41	122	38	99	147	121
AATSC-AL	AATTC-AL	41	43	124	38	105	149	123
AATSC-AM	AATTC-AM	43	44	127	38	108	150	124
AATSC-AN	AATTC-AN	44	46	130	38	112	154	128
AATSC-AO	AATTC-AO	46	48	133	38	114	156	129
AATSC-AP	AATTC-AP	48	49	137	38	118	159	133
AATSC-AQ	AATTC-AQ	49	51	140	38	121	165	135
AATSC-AR	AATTC-AR	51	53	143	38	124	165	137
AATSC-AS	AATTC-AS	53	54	146	38	127	172	141
AATSC-AT	AATTC-AT	54	55.5	155	44	133	183	152
AATSC-AU	AATTC-AU	55.5	57	158	44	137	187	155
AATSC-AV	AATTC-AV	57	59	160	44	141	189	157
AATSC-AW	AATTC-AW	59	60	163	44	145	191	160
AATSC-AX	AATTC-AX	60	62	165	44	148	194	162
AATSC-AY	AATTC-AY	62	63.5	168	44	152	196	165
AATSC-AZ	AATTC-AZ	63.5	65	172	44	156	199	168
AATSC-AAA	AATTC-AAA	65	66.5	176	44	160	202	170
AATSC-ABB	AATTC-ABB	66.5	68	178	44	164	205	173
AATSC-ACC	AATTC-ACC	68	70	181	44	168	208	176
AATSC-ADD	AATTC-ADD	70	71.5	187	44	171	215	183
AATSC-AEE	AATTC-AEE	71.5	73	190	44	175	217	186
AATSC-AFF	AATTC-AFF	73	74.5	193	44	179	220	188
AATSC-AGG	AATTC-AGG	74.5	76	197	44	183	222	191